

## ALK (C1156Y)

**Catalog Number:** 26226

**Gene Symbol:** ALK, CD246, NBLST3

**Description:** Anti-ALK (C1156Y) Mouse Monoclonal Antibody

**Background:** Anaplastic lymphoma kinase (ALK) also known as CD246 (cluster of differentiation 246) is a tyrosine kinase receptor that plays an important role in the development of the brain and nervous systems. Deficiencies in ALK, which most commonly as a fusion with other genes, are indicated in cancers.

**Immunogen:** A synthetic peptide from the internal region of ALK, which includes the mutation of C1156Y, human origin.

**Tested Applications:** ELISA, WB, IF, IHC

**Recommended Dilutions:**

ELISA:	1:1000-1:5000
WB:	1:500-1:2000
IF:	1:50-1:100
IHC:	1:50-1:100

**Concentration:** 1 mg/ml

**Host:** Mouse

**Clonality:** Monoclonal

**Isotype:** IgG

**Purity:** Purified from ascites

**Format:** Liquid

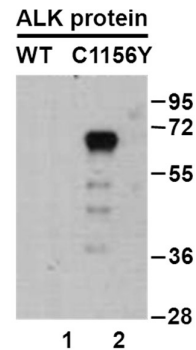
**Preservative:** No

**Constituents:** PBS (without Mg<sup>2+</sup> and Ca<sup>2+</sup>), pH7.4, 150 mM NaCl, 50% glycerol

**Species Reactivity:** Recognizes C1156Y mutant, but not wild type ALK of vertebrates.

**Storage Conditions:** Store at -20°C. Avoid freeze / thaw cycles.

**Western blot:**



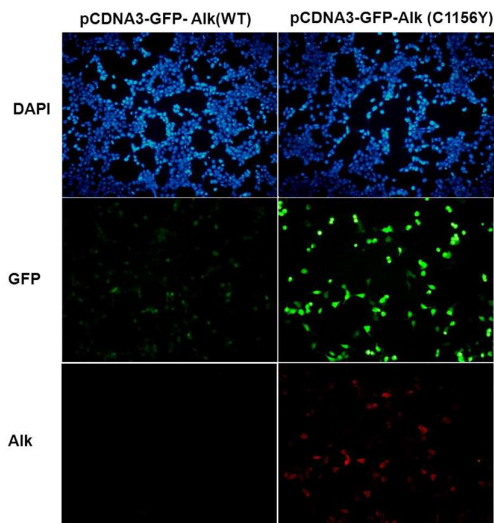
WB: Anti-ALK (C1156Y) mAb

**Western blot analysis of recombinant ALK (C1156Y) and wildtype proteins.**

Purified His-tagged ALK (C1156Y) protein (lane 2) and corresponding wildtype protein (lane 1) were blotted with anti-ALK(C1156Y) monoclonal antibody (Cat. # 26226).

FOR RESEARCH USE ONLY. NOT FOR DIAGNOSTIC APPLICATIONS

**Immunofluorescence:**



**Immunofluorescence of cells expressing ALK proteins with anti-ALK (C1156Y) antibody.**

HEK293T cells were transfected with pCDNA3-GFP-ALK (WT) plasmid (left column) or pCDNA3-GFP-ALK (C1156Y) plasmid (right column), then fixed and stained with anti-ALK (C1156Y) monoclonal antibody (Cat. # 26226).

---

**FOR RESEARCH USE ONLY. NOT FOR DIAGNOSTIC APPLICATIONS**